

TATO

ADJETIVOS

E

ADVÉRBIOS





GRANDE



PEQUENO



GORDO



MAGRO



RÁPIDO



LENTO



BARULHENTO



SILENCIOSO



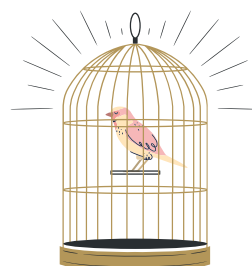
FRIO



QUENTE



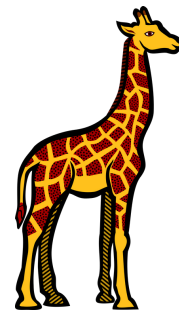
LIVRE



PRESO



BAIXO



ALTO



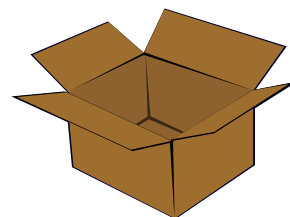
VELHO



NOVO



CHEIO



VAZIO



LEVE



PESADO



GROSSO



FINO



SUBINDO



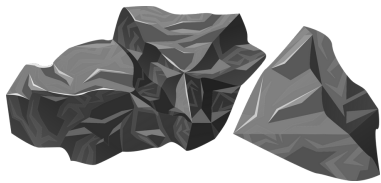
DESCENDO



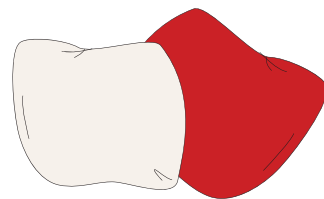
CURTO



LONGO



DURO



MACIO



SECO



ÚMIDO